



## Artists for Obama

A portfolio of limited edition prints by 13 artists

Each is an edition of 150

Printed by Gemini G.E.L.

In support of *Obama Victory Fund*

With a donation of \$20,000 you will receive the complete portfolio of 13 prints as a gift (the prints are not available individually)

Checks for the full amount, made payable to *Obama Victory Fund*, should be sent to:

Obama Victory Fund

1800 Century Boulevard East

Suite 210

Los Angeles, California 90067

ATTN: Julie Walden

For additional information,

email [JWALDEN@BARACKOBAMA.COM](mailto:JWALDEN@BARACKOBAMA.COM)

SEE VISUALS AND DONATION FORM BELOW

*Please click on title to enlarge image.*



## Artists for Obama

A portfolio of limited edition prints by 13 artists

Printed by Gemini G.E.L.

---



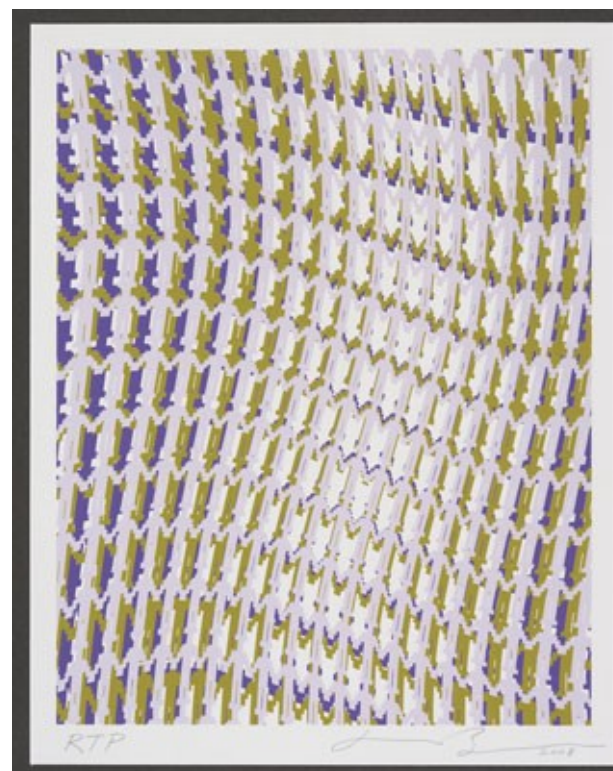
JOHN BALDESSARI

[\*Raised Eyebrows/Furrowed Foreheads \(Red, White and Blue\)\*](#), 2008

7 color screenprint

12" x 14"

Edition: 150



JONATHAN BOROFSKY

[\*Human Structures and the Light of Consciousness for Obama\*](#), 2008

3 color screenprint

14" x 11 1/4"

Edition: 150

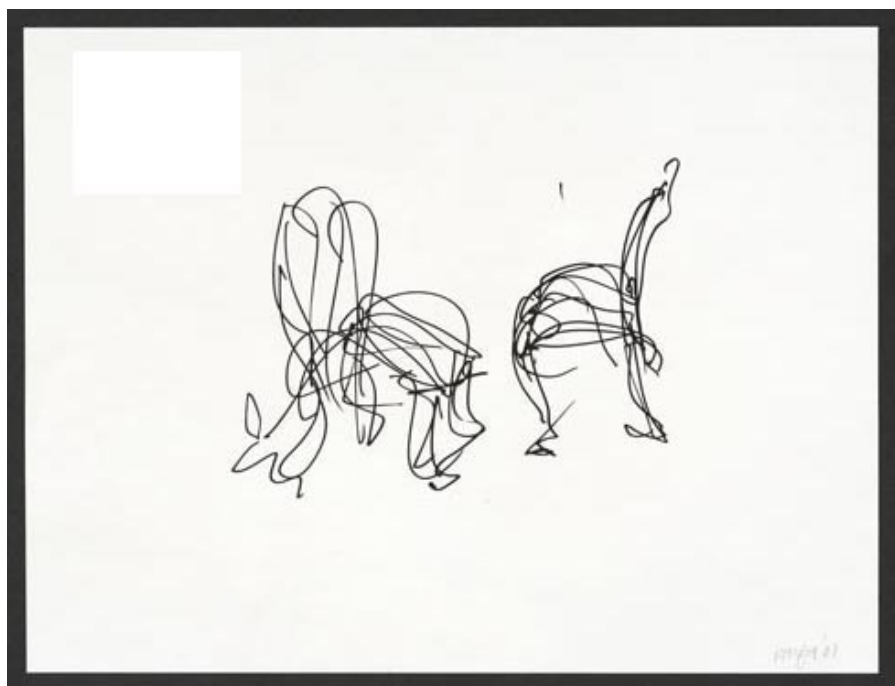


## Artists for Obama

A portfolio of limited edition prints by 13 artists

Printed by Gemini G.E.L.

---



FRANK GEHRY  
[\[not yet titled\]](#), 2008  
1 color lithograph  
12" x 14"  
Edition: 150



ANN HAMILTON  
[Q](#), 2008  
1 color lithograph  
14" x 12"  
Edition: 150



## Artists for Obama

A portfolio of limited edition prints by 13 artists

Printed by Gemini G.E.L.



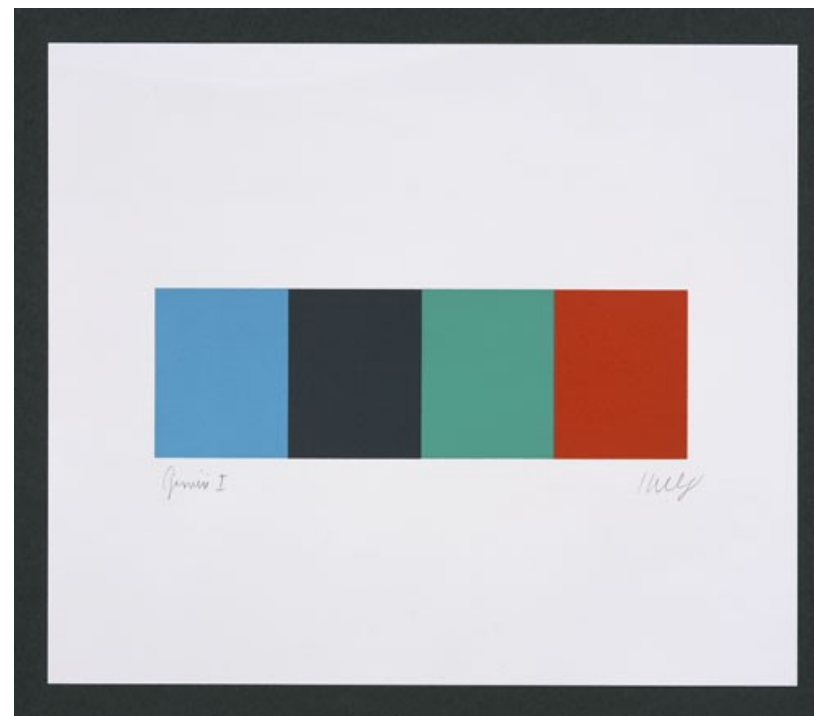
JASPER JOHNS

Untitled, 2008

1 color etching

8 ½" x 12"

Edition: 150



ELLSWORTH KELLY

Blue Gray Green Red, 2008

4 color lithograph

12" x 14"

Edition: 150



## Artists for Obama

A portfolio of limited edition prints by 13 artists

Printed by Gemini G.E.L.

---



BRICE MARDEN  
[\*Etching for Obama\*](#), 2008  
1 color etching  
14" x 12"  
Edition: 150



JULIE MEHRETU  
[\*Untitled 1 \(amulets\)\*](#), 2008  
1 color etching/chine-collé  
12" x 14"  
Edition: 150



## Artists for Obama

A portfolio of limited edition prints by 13 artists

Printed by Gemini G.E.L.



KEN PRICE

[\*Living with Rocks\*](#), 2008

3 color lithograph/screenprint

14" x 14"

Edition: 150



SUSAN ROTHENBERG

[\*Twisted Cat\*](#), 2008

1 color lithograph

14" x 14"

Edition: 150

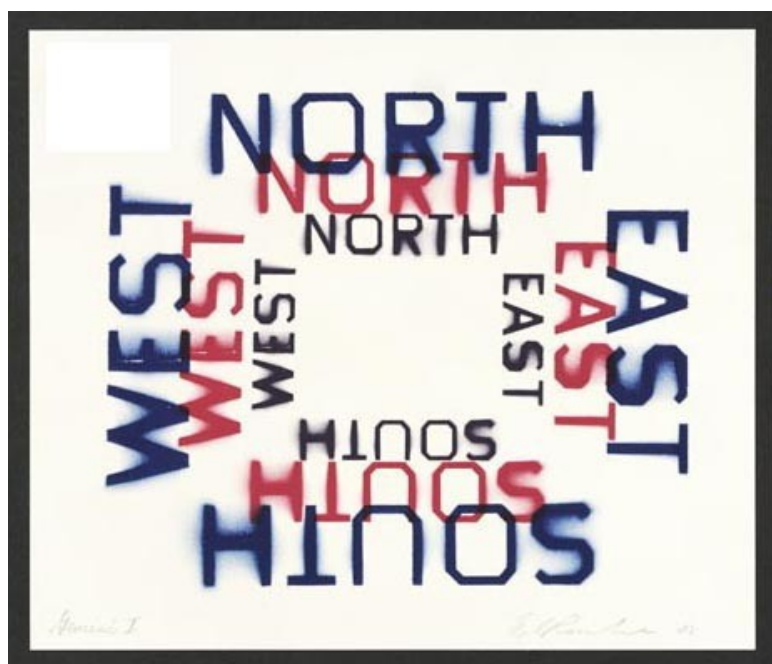


## Artists for Obama

A portfolio of limited edition prints by 13 artists

Printed by Gemini G.E.L.

---



ED RUSCHA  
[\*All Points\*](#), 2008  
3 color lithograph  
12" x 14"  
Edition: 150



RICHARD SERRA  
[\*Promenade Notebook Drawing for Obama\*](#), 2008  
1 color etching  
13 1/2" x 10 1/2"  
Edition: 150

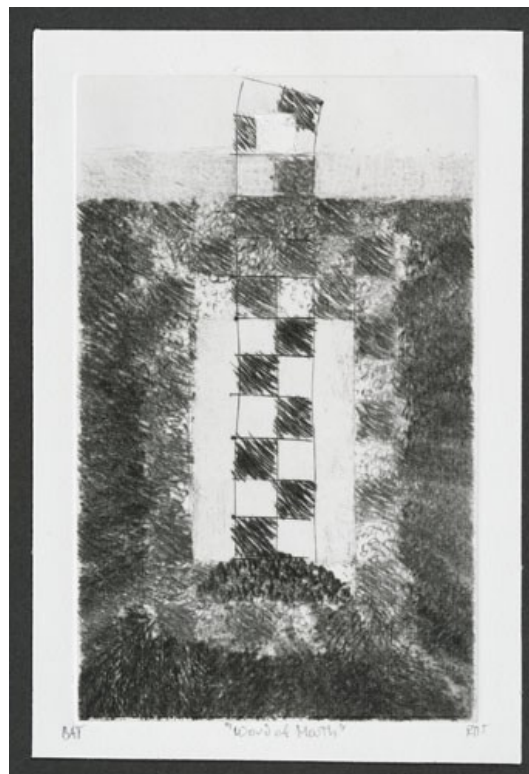


## Artists for Obama

A portfolio of limited edition prints by 13 artists

Printed by Gemini G.E.L.

---



RICHARD TUTTLE  
[\*Word of Mouth\*](#), 2008  
1 color etching/chine-collé  
9" x 6"  
Edition: 150

The first \$2,300 of each contribution from an individual will be allocated to Obama for America and will be considered designated for the general election. The next \$28,500 of each contribution from an individual will be allocated to the Democratic National Committee. Any contributor may designate his or her contribution for a particular participant. (Participants are Obama for America and the DNC). The allocation formula above may change if any contributor makes a contribution that, when allocated, would exceed the amount that the contributor may lawfully give to either participant.

Please make checks payable to:

**OBAMA VICTORY FUND**

Attn: Julie Walden

1800 Century Park East, Ste. #210

Los Angeles, CA 90067

Fax: 310-277-2094

Phone: 310-277-2008

**Total Amount: \$ \_\_\_\_\_**

Federal law requires us to use our best efforts to collect and report the name, mailing address, occupation and employer of individuals whose contributions exceed \$200 in an election cycle.

First & Last Name: \_\_\_\_\_

Address: \_\_\_\_\_

City / State / Zip: \_\_\_\_\_

If foreign address provide US passport number: \_\_\_\_\_

Employer: \_\_\_\_\_ Occupation: \_\_\_\_\_

Work Phone: \_\_\_\_\_ Work Fax: \_\_\_\_\_

Home Phone: \_\_\_\_\_ Email: \_\_\_\_\_

I certify that I am a U.S. citizen or legal permanent resident of the U.S.

Signature: \_\_\_\_\_

**Contribute by Personal Check:**

Please make checks payable to "Obama Victory Fund" and mail to the address listed above.

**Contribute by Credit Card:**

Please bill my personal credit card:  Visa  MasterCard  AMEX  Discover

Card Number: \_\_\_\_\_ Exp: \_\_\_\_\_

Name as it appears on the card: \_\_\_\_\_

Signature: \_\_\_\_\_

Second Name on Account, if Joint Account\*: \_\_\_\_\_

**\*Contributions will be evenly attributed between names.**

2nd Name Employer: \_\_\_\_\_ 2nd Name Occupation: \_\_\_\_\_

Second Signature for Joint Account: \_\_\_\_\_

**OVF Staff Name:** \_\_\_\_\_ **OVF Staff Signature:** \_\_\_\_\_

Obama Victory Fund does not accept contributions from currently registered federal lobbyists, registered foreign agents, political action committees, or minors under the age of 16. Federal law prohibits the acceptance of corporate contributions. Contributions and gifts to the Obama Victory Fund are not deductible for federal income tax purposes.

Paid for by Obama Victory Fund, a joint fundraising committee authorized by Obama for America and the Democratic National Committee.